



A Comprehensive Guide

Full-Spectrum Cannabis

Extracts for Dogs

TABLE OF CONTENTS

3	Preamble
4	Who is This Guide For?
5-7	Section II: Understanding Full-Spectrum Cannabis Extracts
8	Section II: Understanding Full-Spectrum Cannabis Extracts
9-12	Section IV: Benefits of Full-Spectrum Cannabis Extracts for Dogs
12-16	Section V: Choosing the Right Product
17-19	Section VI: Administration and Dosage
20-22	Section VII: Safety and Potential Side Effects
22-23	Section VIII: Legal and Ethical Considerations
24-25	Section IX: Educating Pet Owners
26	Section XI: FAQs
27	Section XII: Conclusion

PREAMBLE

The 'Full-Spectrum Cannabis Extracts for Dogs: A Comprehensive Guide' is your gateway to the effective use of natural cannabis products for your furry friend. You can get all the details about cannabis products for dogs as a newbie and not feel overwhelmed due to the new phase involving your canine pal(s). Every chapter in this guide will make the switch to cannabis extracts easier for you and your pet.



Recent findings from research highlight the positive impact of full-spectrum cannabis extracts on canine health. These extracts are derived from a range of premium strains like cannabis sativa and indica to offer effective support for various health issues. Canines experiencing diverse health issues can get vital support required for better management of different challenges through this guide.

The guide's main goal is to provide you with essential information about cannabinoids, the compounds responsible for the effects of cannabis extracts, and other vital details. Each section carefully provides information backed by research evidence to offer insights and help you understand the benefits of high-quality cannabis products for your dog's health.



Take full advantage of all details provided through this guide and unlock the potential of full-spectrum cannabis extracts your furry friend(s) need to thrive. This guide has something valuable for everyone, and newbies or experienced owners using cannabis extracts will get vital insights and great results with ease!

WHO IS THIS GUIDE FOR?

The comprehensive full-spectrum extracts guide for dogs is designed to help various audiences maximize natural cannabis products for their pets:

Pet owners new to full-spectrum cannabis extracts

This guide offers essential information pet owners need to use full-spectrum extracts correctly. Learn about cannabinoids, the benefits of cannabis extracts, and more, providing a solid foundation as you incorporate these natural remedies into your pet's routine.

Pet owners seeking new consumption methods

Discover a variety of consumption methods to enhance the effects and benefits of full-spectrum cannabis extracts for your dog. This guide offers insights into different approaches to consuming cannabis extracts, empowering you to find the most effective method for your furry friend.

Pet owners seeking quality products

Finding high-quality full-spectrum cannabis extracts can be challenging. This guide provides valuable information on identifying reputable producers, reading product labels, and selecting the best brands. Learn what top-quality products should offer and how to ensure you're getting the best for your pet.

Pet owners interested in correct dosing techniques

Dosing full-spectrum cannabis extracts can vary, and this guide offers a plan for microdosing or incremental dosing to achieve desired effects. By following the dosing guidelines outlined in this guide, you can optimize the benefits of natural cannabis extracts for your dog.

Pet owners seeking comprehensive information about cannabis extracts

With the abundance of information available about cannabis extracts, it can be overwhelming to find accurate and reliable information. This guide consolidates all the essential information you need to know about cannabis extracts, making it easier than ever to enhance your knowledge and understanding of these natural remedies.



SECTION I: INTRODUCTION



The market for cannabis extracts is on track for a steady increase as owners seek natural, safe, and efficient alternatives for their pets. Cannabis extracts are now legal in several countries around the world after research evidence confirms the potency of these natural products. Pet owners now desire effective cannabis extracts owing to the increased proof of their efficacy and safety in veterinary medicine.

Recent research evidence confirms that cannabis extracts can be effective in treating conditions like seizures, osteoarthritis, and many more in pets. Pets can also receive relief from diverse health conditions through correct use of cannabis extracts.

SECTION II: UNDERSTANDING FULL-SPECTRUM CANNABIS EXTRACTS

In this section, we will get a clear picture of what a full-spectrum cannabis extract (FSCE) is, how they differ from other cannabis-based products, and other essential details.

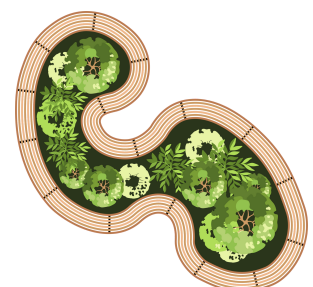
A. What are full-spectrum cannabis extracts?

Full-spectrum cannabis extracts are a combination of cannabinoids, flavonoids, terpenes, and other compounds derived from raw cannabis. Many users of FSCEs prefer the product over isolates based on its enhanced medicinal benefits and entourage effect.



What is the entourage effect?

The entourage effect asserts that compounds present in raw cannabis or extracts act in unison to help ease its psychoactive cannabinoids. FSCEs contain cannabinoids like tetrahydrocannabinol (THC), a compound popular for its psychoactive properties that cause the 'high' effect. However, findings from current research suggest that the mix of non-psychoactive compounds like cannabidiol (CBD) in FSCEs can help reduce strong effects of THC.



B. How do they differ from other cannabis products?

FSCEs are different from other cannabis-based products like broad-spectrum extracts or CBD isolates. See the major differences among these natural extracts:



Aspect	Full-Spectrum Cannabis Extract (FSCEs)	Broad-Spectrum Cannabis Extract (BSCE)	Cannabis Isolate
Composition	Contains all vital compounds found in raw cannabis and includes tetrahydrocannabinol (THC)	Contains all vital compounds found in raw cannabis and includes tetrahydrocannabinol (THC)	Contains a single cannabinoid after an extensive purification process.
cannabis products	Preserves the highest entourage effect among all natural extracts, as all compounds work to enhance expected therapeutic effects. Usually produces a characteristic "high" effect common in products containing THC.	Preserves the entourage effect of cannabis to a reasonable degree, but does not exhibit any 'high' effect common with extracts that contain compounds like THC.	No likelihood of an entourage effect in CBD isolates, since only one non-psychoactive compound is present.
THC Content	Yes	No	No THC
Legal Status	Legal status differs by jurisdiction, as THC is restricted in some areas.	Legal status differs by jurisdiction, as THC is restricted in some areas.	Usually legal in many jurisdictions.

Potential Benefits

Usually comes with many potential therapeutic benefits and a sustained effect after each dose to ease several health symptoms.

Offers potential benefits but does not contain anything on offer from products that contain THC.

Provides certain benefits attributed to its parent isolate.

Dosing Precision

Usually doesn't need too many doses to take effect compared to other cannabis extracts.

Could require repeat doses to cause meaningful effects since it doesn't offer any benefits linked to THC.

Allows precise dosing more than other cannabis extracts.

Flavour and Aroma

Comes with a unique flavour and aroma since it comes with a full package of terpenes, flavonoids, and other essential compounds.

Possesses a flavour similar to cannabis extracts, but doesn't contain any aroma linked to products with THC.

Doesn't usually possess a strong aroma since it has just one compound; manufacturers may add essential oils or other flavours to create a pleasing aroma.

B. How do they differ from other cannabis products?

FSCEs are now useful in treating different ailments dogs experience, and can be of great benefit to manage inflammation, pain, anxiety, and more. The entourage effect can play a role in how these compounds produce therapeutic effects, increasing their efficacy over cannabis isolates.



However, some potential risks could come with the use of FSCEs in dogs based on the natural THC content in these extracts. High doses of THC could be toxic to dogs; hence it is essential to use these extracts under professional supervision. THC could cause some symptoms like incoordination, seizures, lethargy, and so on.

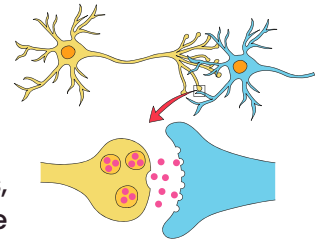
Pet owners should consult a veterinarian before offering FSCEs or any other cannabis-based products to dogs. Owners should use these natural extracts with caution and favour low initial doses that may increase with time. Monitoring any side effects is also essential to ensure your pet gets all of the benefits without any negatives from full-spectrum extracts.



SECTION II: UNDERSTANDING FULL-SPECTRUM CANNABIS EXTRACTS

A. Overview of the endocannabinoid system in dogs What is the endocannabinoid system?

The endocannabinoid system (ECS) refers to a network of enzymes, endocannabinoids (naturally-occurring cannabinoids), and receptors in the body. Components in the ECS network play vital roles in the regulation of essential processes like appetite, memory, pain sensation, mood, and so on.

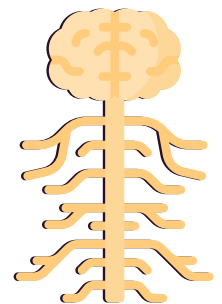


The system was first discovered in humans and can help regulate different physiological processes across the body.

Do dogs have an endocannabinoid system?

Research evidence from Silver (2019) confirms that dogs do have an endocannabinoid system. These natural cannabinoids system plays essential roles in dogs and other animals as described in its human variant. Common roles played by the ECS in dogs include regulation of vital physiological processes like appetite, pain sensation, memory, etc.

The ECS in dogs also promotes homeostasis, allowing Man's Best Friend better control of their system functions



B. How cannabis extracts interact with the endocannabinoid system

Cannabis extracts that contain CBD and THC interact with the endocannabinoid system by binding onto cannabinoid receptors. These receptors are molecules that are responsible for several vital functions throughout the body. Two major receptors – CB1 and CB2 – are responsible for most responses felt after cannabinoid interact with the ECS.

These receptors convey vital signals after interacting with cannabis extracts to influence how the ECS responds towards improving health effects. Some common results from this interaction can help trigger pain relief, improve appetite, reduce inflammation, and so on.



C. Implications for health and wellness

Multiple health benefits

Interactions between natural herb extracts and the ECS continues to unearth several potential health benefits for dogs and other animals. The improved research results suggest that cannabis extracts can help against inflammation, boost appetite, promote stress and anxiety relief along with other essential functions.

Improved wellness potential

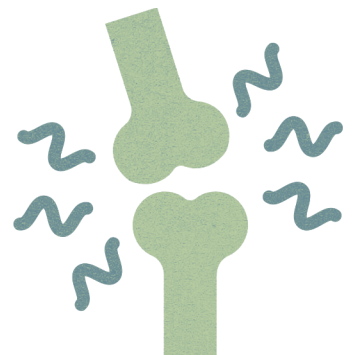
Knowing how FSCEs interact with the ECS can help uncover new approaches to boost overall wellness in dogs. Cannabis extracts support the maintenance of balance and improved health in diverse physiological systems. This implication could be crucial to help dogs access better quality of life overall.

SECTION IV: BENEFITS OF FULL-SPECTRUM CANNABIS EXTRACTS FOR DOGS

FSCEs first gained popularity for their therapeutic benefits in humans, and deeper research confirms these natural extracts are beneficial to dogs too. The healthy mix of cannabinoids, flavonoids, terpenes, and a host of other essential compounds work to produce diverse effects in dogs. These healthy cannabis extracts can be of great benefit to dogs for:

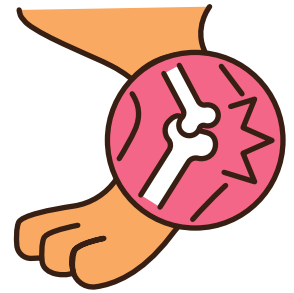
A. Pain management

FSCEs provide a major benefit in humans and animals – the potential to manage pain issues. Powerful cannabinoids like THC and CBD work through the ECS to help regulate pain sensations. Modulating the ECS also ensures these extracts promote better quality of life in dogs currently experiencing serious pain conditions.



B. Arthritis and joint pain

Dogs can experience osteoarthritis and other forms of joint inflammation as they grow older. Evidence supports the use of FSCEs to manage symptoms linked to arthritis conditions by reducing inflammation around the joint area. Other research also confirms the efficacy of cannabis extracts to improve joint function and mobility in subjects with an endocannabinoid system.



C. Post-surgery recovery

Dogs may require surgery at some point to help improve their quality of life, fend off infections, and for other health reasons. Post-surgical pain is common after many procedures and may require anti-pain medication to ease recovery.

FSCEs possess anti-inflammatory compounds that can help dogs manage pain better after going through surgery. The anti-inflammatory properties of FSCEs can also help ease discomfort and reduce swelling after surgeries. Dogs on FSCE doses are likely to gain a quicker recovery without damaging side effects.



D. Anxiety and stress relief

Anxiety and stress are not uncommon to dogs, as some of these pets could experience emotional discomfort for different reasons. These issues may lead to odd behaviours, irregular movements, loud barks, or other issues in some dogs.

FSCEs possess the properties to help dogs overcome anxiety while reducing stress levels in other canines. Receptors in the brain will receive soothing signals after ingesting FSCEs to promote relaxation and help dogs manage anxiety problems much easier.



E. Separation anxiety

Dogs experience separation anxiety especially when they have to stay alone for long periods. Many canines must grapple with this problem and may experience prolonged symptoms without adequate care.

FSCEs contain potent properties that can help dogs manage separation anxiety to a reasonable degree. These extracts possess compounds with a soporific effect and can improve your dogs' quality of life significantly.



F. Noise phobias

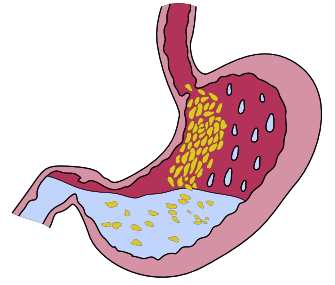
Dogs usually freak out when they hear loud noises in thunderstorms or in busy environments. Continuous exposure to such noises could develop strong phobias in such dogs, sparking fear episodes whenever loud sounds ring out. FSCEs can promote a calmer response to such noises, helping to reduce or eliminate phobias dogs may experience from exposure to loud noises.



G. Appetite stimulation and digestive health

Poor appetite may affect dogs, seeing these canines avoid their regular meals for long periods. FSCEs can help deliver better appetite in dogs based on its high content of relaxing compounds. Dogs will be able to maintain a healthier appetite after using cannabis extracts. Digestive issues may also trouble dogs at some point, limiting their potential to absorb nutrients properly.

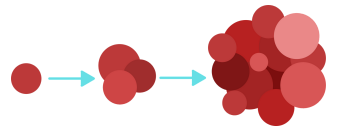
FSCEs can provide the effective support canines need for improved gut health, helping your dogs gain better digestion potential with improved results.



H. Cancer treatment support

Dogs battling cancer need all the support they can get, and FSCEs can help deliver improved responses to aid treatment in canines. Common symptoms linked to cancer include pain, nausea, and inflammation. FSCEs can help deliver enhanced support to dogs that require help to alleviate cancer symptoms, helping canines achieve improved health without hassle.

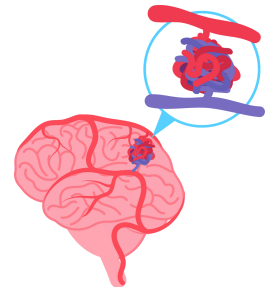
These extracts possess antiemetic properties to ease nausea along with other functions to help dogs recover from cancer with great results.



I. Epilepsy and seizure management

Epilepsy is a neural disorder that can affect dogs. The condition can cause seizures in canines, limiting their potential for a better quality of life. FSCEs can help improve the quality of life in dogs experiencing symptoms of epilepsy.

These extracts can work against seizures and help against this neurological disorder. FSCEs contain compounds that carry out neuroprotective functions and can be of great benefit to your dogs.



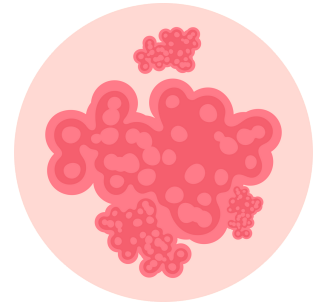
J. Skin conditions and allergies

Dogs may experience diverse skin allergies and conditions that could trigger intense itching, inflammation, and other forms of discomfort. FSCEs could act to help dogs ease their management of conditions that trigger itching and any kind of discomfort they may experience. Compounds like THC and CBD can help against inflammation, improving the wellbeing of dogs that consume FSCEs.



K. Atopic dermatitis

Atopic dermatitis is a skin condition some dogs may experience that could lead to itching, irritation, redness, and other skin trouble. The skin condition may require FSCEs for relief and could be the correct remedy dogs require for long-term care against this disorder. Cannabinoids present in FSCEs can also be of great benefit to people seeking skin-healing options for their favourite canines.



L. Allergic reactions

Dogs can react to different substances that could trigger mild to severe allergies. These allergic reactions can receive full attention with a potent cannabis extract. FSCEs contain several compounds that help ease the seriousness of allergies.

Interaction with the ECS by FSCEs helps regulate the immune response to allergies, limiting the severity of such episodes. Dogs may also receive relief from swelling or other reactions triggered by allergies.



SECTION V: CHOOSING THE RIGHT PRODUCT

A. Types of full-spectrum cannabis extracts for dogs

Edibles

Most FSCEs for dogs are available as treats, bite-sized chews infused with a wide profile of cannabinoids and other compounds. This composition makes it easy to offer FSCE to dogs without hassle. However, it could take much longer for the effects to take hold since edibles take longer to transmit cannabinoids into the bloodstream of dogs.

Topicals

Dogs may experience skin inflammation and other pain episodes that could require direct application of soothing extracts. FSCEs as topicals ensure canines get quick relief from pains and other skin issues. Pet owners can get FSCE topicals in balms or creams and apply this mixture directly onto their dog's skin.

Oils and Tinctures

Oils and tinctures are very popular FSCEs for dogs. Pet owners can administer oils and tinctures orally in precise doses to dogs for full benefits these extracts provide. An added advantage of these extracts is the easy absorption of oils and tinctures into the bloodstream. Dogs can secure faster relief from a full-spectrum extract in oils or tinctures.

B. Factors to consider when selecting a product

Consider the following while choosing a cannabis extract for your dogs:

Cannabinoid profile

Seek products that provide a complete cannabinoid profile that details the level of each essential compound in each unit or dose of cannabis extract. The cannabinoid ratio can help you administer correct FSCE doses to your furry friend.



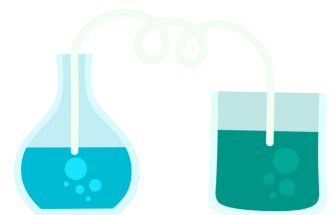
Quality of cannabis strain

Select a product that gets its cannabinoids from trusted growers and manufacturers. For example, countless pet owners looking for cannabis extracts prefer Cannabryl products as the company's products come from a high-quality cannabis strain grown in the Himalayas. High-quality cannabis strains used in making FSCEs ensure you get the best results while offering natural cannabis extracts to your dog.



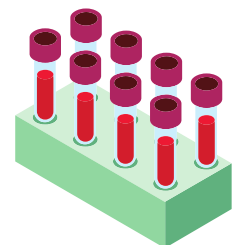
Method of extraction

Information about the extraction method used should be on your preferred product's packaging. Details about the extraction process will help you know how potent your preferred cannabis extract is. Most producers of high-quality FSCE for dogs usually prefer CO2 extraction since this method preserves many cannabinoids from the raw plant.



Independent testing

Third-party testing ensures your preferred FSCE has the highest level of purity and offers potent effects for your dogs' wellbeing. Information about testing results should be publicly accessible and summarized to promote consumer knowledge.



C. Understanding product labels and certifications

Dozens of compounds are in full-spectrum extracts; hence these products must provide vital details to pet owners. Understanding product labelling and certification helps pet owners with information about the content, licensing, potential effects, and other elements of their preferred cannabis extract.



Multiple cannabinoids are responsible for the interaction of cannabis extracts with the endocannabinoid system. These chemical compounds are available in different quantities and may have diverse effects if manufacturers do not provide adequate information to pet owners. A regular FSCE should have the following features on its product packaging:



Brand name

Any FSCE for dogs should have a brand name and logo clearly displayed on its product packaging. The brand name ensures you can easily identify the product best-suited to your canine's needs.



The ideal FSCE should also possess the license logo or stamp on its packaging. License stamps or logos act as a seal of approval on cannabis extract, proving the manufacturer has fulfilled all regulatory requirements before production.

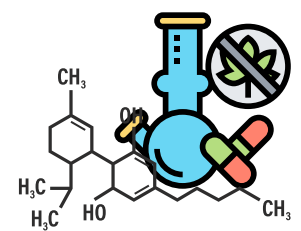
Cannabis symbol

FSCE possesses THC and every product with this cannabinoid should have a distinct label on its package. The logo to highlight THC content in a product usually looks like a cannabis plant in the background of an octagonal badge. You can tell if the cannabis extract you prefer comes with THC or not by checking for this symbol across a product's label.



Main cannabinoid content

Cannabis extracts usually contain either THC or CBD; however, FSCEs come with both cannabinoids. Products made with these compounds in one mix may not offer the same concentration of both cannabinoids. Several factors like the cannabis strain used, dosage measurements or product variant could determine how much CBD or THC is in a cannabis extract. Every cannabis extract should possess clear measures of its content on its outer and/or main packaging. The content measure should clearly state how much THC or CBD (in milligrams) is available in each gram of cannabis extract.



Other important information

Vital details that should be included in a cannabis product for dogs include:



Product class:

this should show details about the kind of FSCE (resin, oil, capsule, etc.) offered through a given extract.

Total units:

This should state how many (bottles, capsules/tablets, sprays, etc.) are in a package of FSCEs for dogs.

Ingredient list:

a high-quality FSCE should highlight its correct composition list on its main packaging. The list should offer information about the weight of each ingredient and appear in descending order. The complete ingredient list should also contain details about glutens, sulphites, allergens, and any other component of the extract.

Optional information:

certain FSCEs can also feature details about recommended product usage, warnings, expiry date, etc.

Net/total weight:

This should clearly state the mean weight or volume per unit of a product, or the total weight or volume of the product on its packaging.

Nutrition facts:

Information about the benefits of FSCE products must be in this section.

Cannabis strain:

information about the cannabis strain selected to produce your preferred cannabis extract. For example, reputable brands like Cannabryl advertise their wide range of cannabis extracts as sourced from a rare Himalayan strain with superior properties in each compound.



D. Recommended brands and products

Dozens of companies produce cannabis extracts for dogs; however, you must select the product your canine needs to improve their health profile. Reputable brands will provide a combination of vital elements with products on offer to allow you choose the best option(s) for your furry pals. Brands that should be in your shopping list for cannabis extracts must provide:



- ✔ Details about the type of psychoactive compounds in the extract, their concentration, potential effects, etc.,
- ✔ Divulging details about potential claims of cannabis extracts currently not backed by much research evidence,
- ✔ Information about the growing climate and location of cannabis used in making the extract,
- ✔ Proof of certification (details showing certification to produce and commercially distribute cannabis extracts for animal consumption),
- ✔ Testing results to prove there are no pesticides, metals, mould, or other impurities in the cannabis extracts for dogs,
- ✔ Third-party testing information (thorough lab testing performed by a government-approved or affiliated organization).

Also, consider products that offer the kind of FSCEs your dog requires for easy administration. You must check out the correct way to offer FSCEs to your dogs and ideal dosage your furry friends need to thrive.



SECTION VI: ADMINISTRATION AND DOSAGE

A. Different methods of administration

1. Oral Administration

Oral administration is the most common method for giving full-spectrum cannabis extracts to dogs. This can be done by mixing the extract with their food or placing it directly into their mouth using a dropper. Products for oral administration include oils, tinctures, capsules, and edible treats. Oral administration is convenient and allows for easy dosing in stable or incremental doses to suit your canine's health needs.

2. Topical Administration

Topical administration involves applying the full-spectrum cannabis extract directly to the skin. This method is often used to target localized issues like skin conditions or joint pain. Topical products can include creams, balms, or sprays. Topical administration is non-invasive and can provide targeted relief.

3. Inhalation

Some full-spectrum cannabis extracts can be vaporized and inhaled, but this is not a common administration method for dogs. This method allows for rapid absorption of the cannabinoids into the bloodstream through the lungs. Inhalation may not be suitable for all dogs and should be done only after receiving express approval of a qualified veterinarian.

4. Sublingual Administration

Sublingual administration involves placing drops of the extract under the dog's tongue, where it is absorbed directly into the bloodstream. This method is believed to have a faster onset of action compared to oral ingestion. Sublingual products often come in the form of tinctures or sprays.

B. Recommended dosages based on weight, condition, and product potency

C. Suggested dosage chart

Most cannabis extracts are available as edible treats, oils, topicals, or capsules. You can adopt an incremental dosing plan for your dog to get full benefits from FSCE. Take guidance from these dosage charts below to administer FSCEs correctly to your dogs based on their weight class, breed, and type of natural extract:



Suggested dosage for dogs: FSCE oils (required needs vs weight)

Weight

	5 – 10lbs	+10lbs – 25lbs	+25lbs – 50lbs	+50lbs – 100lbs	+100 – 150lbs
FSCE (in mg) per bottle	400mg/30ml	1000mg/30ml	1200mg/30ml	1600mg/30ml	2200mg/30ml
Low	0.125ml (2 drops for 0.18mg FSCE)	0.15ml (3 drops)	0.2ml (~3 drops)	0.2ml (~3 drops)	0.25ml (4 drops)
Mild	0.25ml (4 drops)	0.25ml (4 drops)	0.3ml (~5 drops)	0.3ml (~5 drops))	0.3ml (~5 drops)
Average	0.375ml (5 drops)	0.375ml (5 drops)	0.375ml (5 drops)	0.375ml (5 drops)	0.4ml (5 drops)
Severe	0.5ml (7 drops)	0.55ml (7 drops)	0.55ml (7 drops)	0.6ml (8 drops)	0.65ml (~8 drops)

Suggested dosage for FSCE (FSCEtype vs weight)

	Very small (Papillons, Chihuahuas, etc.) 5 – 10lbs	Small (Pugs, Shih Tzu, etc.) +10lbs – 25lbs	Medium (Bulldogs, Welsh Corgis, Pembroke, etc.) +25lbs – 50lbs	Large (Retrievers, Pointers, Vizslas, etc.) +50lbs – 80lbs	Giant (Rottweilers, Mastiffs, etc.) +100 – 150lbs
Oils	0.1 – 0.5ml from 400mg/30ml bottle	0.15 – 0.55ml from 1000mg/30ml bottle	0.2 – 0.55ml from 1200mg/30 ml bottle	0.2 – 0.6ml from 1600mg/30ml bottle	0.25 – 0.65ml from 2200mg/30ml bottle
Edible Treat	0.25mg FSCE per day in entire serving	0.5mg FSCE per day in entire serving	0.8mg FSCE per serving	1mg FSCE per serving	1.2 – 1.5mg per serving
Topical	Apply on affected area as required	Apply on affected area as required	Apply on affected area as required	Apply on affected area as required	Apply on affected area as required

Most cannabis extracts are available as edible treats, oils, topicals, or capsules. You can adopt an incremental dosing plan for your dog to get full benefits from FSCE. Take guidance from these dosage charts below to administer FSCEs correctly to your dogs based on their weight class, breed, and type of natural extract:



D. Monitoring and adjusting dosage for effectiveness

1. Monitoring

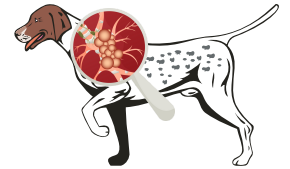
It's important to monitor your canine's response closely after starting your dog on FSCEs. Look for signs of improvement in their condition like reduced pain or anxiety, increased appetite, or better mobility. Also look out for any adverse effects like lethargy or gastrointestinal upset.

2. Adjusting Dosage

You may need to adjust the dosage if you discover that your dog is not experiencing the desired effects from using FSCEs. Gradually increase the dose until the desired effects are achieved only after consulting with a vet for guidance. However, you may need to reduce the dosage if you notice any adverse effects such as lethargy or gastrointestinal upsets. You should reassess your dog's condition regularly and work closely with a qualified vet to help ensure that your furry pals receive the optimal dose for their needs.

SECTION VII: SAFETY AND POTENTIAL SIDE EFFECTS

A. Common side effects in dogs



FSCEs are considered safe for dogs; however, some common side effects may occur that affect your furry pets that include:

- ✔ Lethargy: Dogs may appear more tired or less active than usual.
- ✔ Gastrointestinal upset: This can include symptoms like diarrhoea, vomiting, or changes in appetite.
- ✔ Dry mouth: Dogs may experience increased thirst or changes in saliva production.
- ✔ Changes in behaviour: Some dogs may exhibit changes in behaviour like increased anxiety or restlessness.

B. Risks of overdose and toxicity



Overdosing is rare in puppies but may occur if dogs consume large amounts of FSCEs. Symptoms of overdose or toxicity may include:

- ✔ Severe weakness: Excessive drowsiness or difficulty waking up.
- ✔ Incoordination: Difficulty walking or standing.
- ✔ Tremors or seizures: Uncontrolled shaking or convulsions
- ✔ Respiratory depression: Slow or shallow breathing.

Seek immediate care from a veterinary doctor if you suspect that your dog has overdosed on cannabis extracts.



C. Precautions and contraindications



FSCEs may not be suitable for all dogs, especially those with certain medical conditions or sensitivities. Precautions and contraindications include:

- ✔ Sensitivity to THC: Some dogs may be more sensitive to THC and may experience adverse effects at lower doses.
- ✔ Medical conditions: Dogs with gastrointestinal diseases or those taking certain medications may be at higher risk for adverse effects.
- ✔ Age: Puppies and senior dogs may be more susceptible to the effects of cannabis extracts and should receive close monitoring by experienced veterinarians and their owners.

D. Interaction with other medications

FSCEs can interact with other medications your dog may be taking. These interactions can impact the effectiveness or safety of both the cannabis extract and the medication. It is essential to consult with your veterinarian before using cannabis extracts along with other medications.



E. Use in pregnant or nursing dogs

The use of FSCEs in pregnant or nursing dogs is not recommended due to potential risks to the developing puppies. THC possesses the potential to cross a dog's placental barrier and pass to nursing puppies through milk. However, pet owners can administer FSCEs to dogs nursing puppies after the young ones grow strong enough to live without their mother's milk.



F. Benefits for old dogs

Dogs are likely to experience diverse health issues as they age. FSCEs provide aging dogs much-needed relief from pains, inflammation, and a range of other challenges they may experience. These natural extracts interact with receptors in the old dogs' endocannabinoid system to improve their response to conditions like osteoarthritis, ensuring your mature canines get the best quality of life possible.



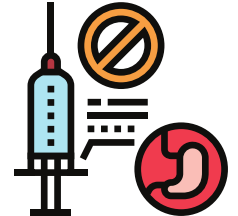
G. Risk of marijuana poisoning

Proper use of FSCEs do not come with any risk of marijuana poisoning for dogs. However, these canines may experience significant discomfort if they ingest impure, substandard cannabis and increase their risk of marijuana poisoning. Buying cannabis extracts from reputable manufacturers is the safest way to prevent marijuana poisoning in dogs and ensure total health for your canine(s).



H. How to recognize signs of adverse reactions

It's crucial to monitor your dog for signs of adverse reactions when using FSCEs. Signs to watch for include:



- ✔ Excessive sedation: More drowsiness or lethargy than usual.
- ✔ Gastrointestinal upset: Persistent vomiting, diarrhoea, or changes in appetite
- ✔ Behavioural changes: Increased anxiety, agitation, or disorientation.

Stop the use of cannabis extracts and consult with your veterinarian if you notice any of these signs in pets who use FSCEs.



SECTION VIII: LEGAL AND ETHICAL CONSIDERATIONS

A. Legal status of cannabis for dogs in different regions of the world

The legal status of cannabis extracts including FSCEs for dogs varies widely depending on the country and region. In some places, cannabis is legal for both medical and recreational use, while in others, it remains illegal. In India, the use of cannabis leaves for medicinal and scientific purpose are completely legal.



B. Ethics of using cannabis products for pets

The use of cannabis products for pets raises ethical considerations, including:

Informed Consent

Dogs cannot provide informed consent for treatment, so it's crucial for pet owners to make decisions based on their best interests and in consultation with a veterinarian

Animal Welfare

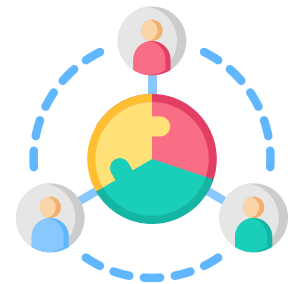
: Ensuring that the use of cannabis products improves the overall welfare and quality of life for the animal without causing harm or unnecessary suffering.

Alternative Treatments

Considering alternative treatments and weighing the risks and benefits of cannabis products against other options.

C. Veterinarian involvement and guidance

Veterinarians play a crucial role in guiding the use of cannabis products for pets. They can provide information on dosage, administration, and potential side effects, as well as monitor the dog's response to treatment. Consulting with a veterinarian before using cannabis products for your dog is recommended.



D. Compliance with local regulations

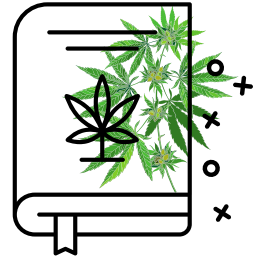
It's essential to comply with local regulations regarding the use of cannabis products for pets. This includes obtaining any necessary licenses or permits and ensuring that products are obtained from legal and reputable sources. Failure to comply with regulations can result in legal consequences and may harm the animal's welfare.



SECTION IX: EDUCATING PET OWNERS

A. Dispelling myths and misconceptions about cannabis for dogs

There are several myths surrounding the use of cannabis for dogs, and these misconceptions usually discourage potential pet owners from trying out these extracts for their pet's wellbeing. Dispelling these myths is crucial, as correct information will encourage more pet owners to gain access the full benefits of natural extracts. Common myths surrounding cannabis extracts for dogs include:



Cannabis is always harmful

Cannabis extracts may have adverse effects in some cases, especially when abused by pet owners. It is a safe and effective natural extract when used correctly and under veterinary guidance.

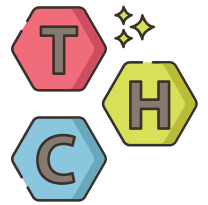
All cannabis products are the same

Different types of cannabis products exist, with each possessing unique compositions and effects. It is essential to understand differences between products based on cannabis and choose the most appropriate one for your dog.

Cannabis is always psychoactive

Not all cannabis products contain psychoactive compounds like THC. Non-psychoactive cannabinoids like CBD, CBN, CBG can be used without causing a "high" effect in dogs.

B. Educating on the difference between CBD and THC



CBD (cannabidiol) and THC (tetrahydrocannabinol) are two of the most well-known cannabinoids found in cannabis. The main differences between CBD and THC include:

Psychoactive cannabinoid

THC is psychoactive and can cause a "high," while CBD is non-psychoactive.

Medical Benefits

Both CBD and THC have potential medical benefits, but they work in different ways. CBD is more commonly used for its therapeutic effects while THC is primarily used for its psychoactive properties.

Legality

The legal status of CBD and THC varies depending on the region. CBD derived from hemp is legal in many places while THC is often restricted to medical use or prohibited entirely. In India, these compounds are naturally present in the leaves of plant, and allowed as a full spectrum to be used for medicinal purpose.

C. Importance of consulting with a veterinarian

Consulting with a veterinarian is crucial before using cannabis products for your dog. Veterinarians can provide valuable information and guidance, including:



Dosage recommendations

Veterinarians can recommend the appropriate dosage of cannabis products based on your dog's weight, condition, and other factors.

Monitoring and adjusting treatment:

: Veterinarians can monitor your dog's response to treatment and adjust as needed to ensure optimal results.

Identifying potential risks:

Veterinarians can help identify any potential risks or contraindications that may affect your dog's suitability for cannabis treatment

SECTION XI: FAQs

Q1. Is it safe to give my dog full-spectrum cannabis extracts?

Full-spectrum cannabis extracts (FSCEs) can be safe for dogs when used appropriately and under veterinary guidance. It is essential to start with a low dose and monitor your dog for any adverse reactions.



Q2. Will my dog get high from full-spectrum cannabis extracts?

Full-spectrum cannabis extracts (FSCEs) contain THC, which is psychoactive and can cause a "high" effect. However, the amount of THC in these extracts is typically low and may not cause significant psychoactive effects in dogs.



Q3. How do I know if full-spectrum cannabis extracts are right for my dog?

Consulting with a veterinarian is the best way to determine if full-spectrum cannabis extracts (FSCEs) are appropriate for your dog. Your vet can assess your dog's condition and provide guidance on dosage and administration.



Q4. Can I give my dog full-spectrum cannabis extracts if they are on other medications?

Full-spectrum cannabis extracts (FSCEs) can interact with other medications, so it is essential to consult with a veterinarian before giving them to your dog. Your vet can advise you on any potential interactions and how to manage them.



Q5. How long does it take to see results from full-spectrum cannabis extracts?

The time it takes to see results can vary depending on the dog and the condition being treated. Some dogs may experience relief within few hours, while others may take several weeks to see any meaningful improvements.



Q6. Are there any side effects of giving full-spectrum cannabis extracts to my dog?

While full-spectrum cannabis extracts (FSCEs) are generally considered safe, some dogs may experience side effects such as lethargy, gastrointestinal upset, or changes in behaviour after incorrect use. It is essential to monitor your dog closely and consult with a vet if you notice any odd reactions from your canine after using FSCEs.



SECTION XII: CONCLUSION

FSCEs have shown promise as a natural treatment option for various health conditions in dogs. These extracts offer a range of potential benefits from pain management to anxiety relief to support for cancer treatment dogs need to lead healthier lives. However, it is essential to use these products responsibly and under the guidance of an experienced, qualified vet to ensure the safety and well-being of your furry friend.

As research into the benefits of cannabis extracts for dogs continue, it is essential to stay informed about how these products are used. Consulting a vet before beginning any treatment plan is always a smart idea. You can always determine the appropriate dosage and administration method for your dog's specific needs with the vet's guidance and recommendations.

By understanding the potential benefits and risks of FSCEs and following proper guidelines, you can help improve the quality of life for your dog and provide them with the care and support they deserve.



References

- De Briyne, N., et al, Cannabis, Cannabidiol Oils and Tetrahydrocannabinol—What Do Veterinarians Need to Know? *Animals*, 2021, <https://www.mdpi.com/2076-2615/11/3/892>
- Cannabis in Veterinary Medicine, AVMA, , <https://www.avma.org/sites/default/files/2021-03/APH-CannabisResources-Report-20201207.pdf>
- Morrison, B.J., (2023) CBD Oil for Dogs: What You Need to Know. *Pet MD*. [By understanding the potential benefits and risks of FSCEs and following proper guidelines, you can help improve the quality of life for your dog and provide them with the care and support they deserve.](#)
- Wightman, C., Recommending CBD and Hemp Products for Pets: Legal Considerations for Veterinarians. Vicente LLP, [By understanding the potential benefits and risks of FSCEs and following proper guidelines, you can help improve the quality of life for your dog and provide them with the care and support they deserve.](#)
- Cannabis Science and Technology (2023) Overview of Cannabis for Pets. [By understanding the potential benefits and risks of FSCEs and following proper guidelines, you can help improve the quality of life for your dog and provide them with the care and support they deserve.](#) Kogan, L., Schoenfeld-Tacher, R., Hellyer, P., & Rishniw, M. (2019). US Veterinarians' Knowledge, Experience, and Perception Regarding the Use of Cannabidiol for Canine Medical Conditions. *Frontiers in veterinary science*, 5, 338. <https://doi.org/10.3389/fvets.2018.00338>
- Di Salvo, A., Conti, M. B., and Rocca. D. Giorgia (2023) Pharmacokinetics, Efficacy, and Safety of Cannabidiol in Dogs: An Update of Current Knowledge. *Front Vet Sci*. 2023; 10: 1204526. doi: 10.3389/fvets.2023.1204526
- Alvarenga, C. I., Panickar, S. K., Hess, H., and McGrath, S. (2023) Scientific Validation of Cannabidiol for Management of Dog and Cat Diseases. Vol. 11:227-246. <https://doi.org/10.1146/annurev-animal-081122-070236>
- Technavio. 2019. CBD Oil Market by Product and Geography—Forecast and Analysis 2020–2024. Rep., Technavio, Tor. <https://www.technavio.com/report/cbd-oil-market-industry-analysis> Patikorn, C., Nerapusee, O., Soontornvipart, K., Lawonyawut, K., Musikpodok, K., Waleethanaphan, K., and Anantachoti, P. (2023) Efficacy and Safety of Cannabidiol for the Treatment of Canine Osteoarthritis: A Systematic Review and Meta-Analysis of Animal Intervention Studies. *Front. Vet. Sci., Sec. Anesthesiology and Animal Pain Management*. Vol. 10. <https://doi.org/10.3389/fvets.2023.1248417>
- Yu, H. C., and Rupasinghe, V. P. H. (2021) Cannabidiol-Based Natural Health Products for Companion Animals: Recent Advances in the Management of Anxiety, Pain, and Inflammation. Vol. 140: 38 – 46. <https://doi.org/10.1016/j.rvsc.2021.08.001>
- Silver, R.J., (2019). The Endocannabinoid System of Animals. *Animals* 9, 686. <https://doi.org/10.3390/ani9090686>.
- Alvarenga, C. I., Wilson, K. M., and McGrath, S. (2023) Tolerability of Long-Term Cannabidiol Supplementation to Healthy Adult Dogs. *Journal of Veterinary Internal Medicine* Volume 38, Issue 1 p. 326-335. <https://doi.org/10.1111/jvim.16949>
- American Kennel Club (2023) CBD Oil for Dogs: What You Need to Know. <https://www.akc.org/expert-advice/health/cbd-oil-dogs/> Banach, D. and Ferrero, P. (2023) Cannabis and pathologies in dogs and cats: first survey of phytocannabinoid use in veterinary medicine in Argentina. *J Cannabis Res*. doi: 10.1186/s42238-023-00209-5
- Nunn, M. (2023) CBD Oil: Health Benefits and More. <https://www.verywellhealth.com/cbd-oil-benefits-uses-side-effects-4174562>
- Government of Canada (2022) Review of Cannabidiol: Report of the Science Advisory Committee on Health Products Containing Cannabis. ISBN: 978-0-660-43616-6. [Review of cannabidiol: Report of the Science Advisory Committee on Health Products Containing Cannabis - Canada.ca](#)

Glossary

Antiemetic:

Substances that reduce nausea and vomiting.

Anti-inflammatory:

Substances that reduce inflammation and swelling.

Anxiety:

A feeling of worry, nervousness, or unease, often about something with an uncertain outcome.

Cannabinoids:

Chemical compounds found in the cannabis plant that interact with the body's endocannabinoid system.

Digestive Health:

The state of the digestive system, including the stomach, intestines, and other organs involved in digestion.

Full-Spectrum Cannabis Extracts:

Cannabis extracts that contain a full range of cannabinoids, terpenes, and other beneficial compounds found in the cannabis plant.

Appetite Stimulation:

The process of increasing or enhancing the desire to eat.

Atopic Dermatitis:

A common skin condition characterized by red, itchy, and inflamed skin.

CBD (Cannabidiol):

A non-psychoactive cannabinoid found in cannabis that is believed to have various therapeutic effects.

Endocannabinoid System:

A complex network of receptors, endocannabinoids, and enzymes that play a role in regulating various physiological processes.

Homeostasis:

The body's ability to maintain internal stability and balance despite external changes.

Broad-Spectrum Cannabis Extracts:

Cannabis extracts that contain a range of cannabinoids but no THC.

CBD Isolates:

Pure CBD extracts that contain only CBD and no other cannabinoids or terpenes.

Entourage Effect:

The theory that the various compounds in the cannabis plant work together synergistically to produce a more significant effect than any single compound alone.

Immune Response:

The body's defence mechanism against foreign invaders, such as bacteria, viruses, and other pathogens.

Nausea:

A feeling of sickness with an inclination to vomit.

Neuroprotective:

Substances that protect the nerves and nerve cells from damage or degeneration.

Inflammation:

The body's response to injury or infection, characterized by redness, swelling, pain, and heat.

Neurological Disorder:

A disorder that affects the nervous system, including the brain, spinal cord, and nerves.

Seizure:

A sudden, uncontrolled electrical disturbance in the brain that can cause changes in behavior, movements, or consciousness.

Stress:

The body's response to physical or emotional pressure, often resulting in feelings of tension or anxiety.

Terpenes:

Aromatic compounds found in cannabis and other plants that may have therapeutic properties and contribute to the plant's scent.

THC (Tetrahydrocannabinol):

The main psychoactive cannabinoid found in cannabis, responsible for the "high" sensation.